

Type LCF



Standard Swivel Joints

with Welding Connection

with Threaded Connection

for Loading Arms

for Food and Pharmaceuticals

Know how & consulting directly from manufacturer with decades of experience

That's why you choose... The logo for IGATEC International features the word 'IGATEC' in a large, bold, grey sans-serif font. Above the 'TEC' part, the word 'International' is written in a smaller, blue sans-serif font. A horizontal blue line runs through the middle of the 'IGATEC' text.

- **Radial gaskets**
Allow a maximum of feasible sealing materials and longer lifetime compared to axial gaskets
- **DUPLEX, SUPERDUPLEX, HASTELLOY, ALUMINIUM...**
We machine all compatible materials
- **ASME, NACE, Norsok, DIN...**
We manufacture according to all required guidelines and directives
- **Customized connections**
- **IGATEC Swivel Joints**
Made of carbon steel (e.g. St52-3, ...) are nitrided to reach maximized hardness of surface and optimized corrosion protection at the same time
- **Certifications**
TA-Luft
VdS
ISO 9001:2008

Headquarter

**IGATEC GmbH &
IGATEC International GmbH**
Siemensstraße 18
D-67346 Speyer

Phone: +49 (0)6232 91 904-0
Fax: +49 (0)6232 91 904-990
eMail: info@igatec.de

Subsidiary

IGATEC International GmbH
Profilstraße 6
D-58093 Hagen

Phone: +49 (0)2331 36 788-0
Fax: +49 (0)2331 36 788-11
eMail: info@igatec-international.de

Swivel Joint Type LCF

Dimensions:

Nominal diameter	DN40 / 1 1/2" up to DN150 / 6"
Working pressure P _{max}	40 bar / 580 psi *
Working temp. T _{min/max}	-55°C up to 250°C / -67°F up to 482°F *
Material	26CrMo4, 42CrMo4, 1.4571
Gasket material	NBR, Viton, PTFE, HPU
Ball material	Stainless steel
Connection	Welding
Style	10, 11, 12, 20, 21, 22, 30, 31
Application	Loading arms

* P_{max} and T_{max} may not occur at the same time

Technical Features:

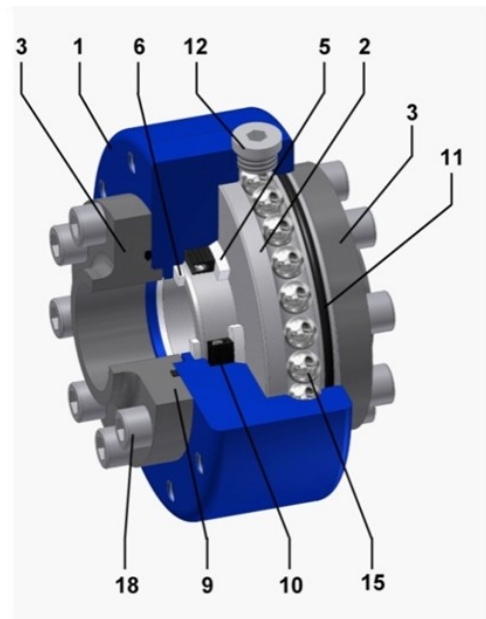
Design	Center flange
No. of ball races	1
Fluid	Diesel, Ethanol, LPG,...
Type of sealing	Radial
External dust seal	Yes
Secondary seal	No
Body	Three-parts
Connection for leakage control	On request
Without grease nipple	On request (e.g. floating suction systems)
Maximum speed	Depends on gasket material

Further Advantages:

	Higher performance by bigger radius of ball race, tight dimensions
--	--

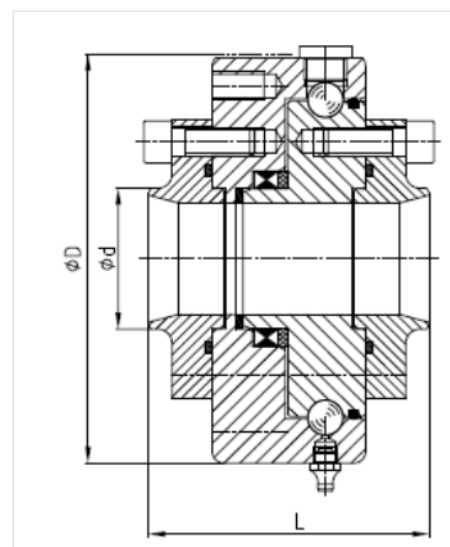
Dimensions and Weights:

DN	40	50	80	100	150
L [mm]	105	119	137	137	150
∅ / D [mm]	153	175	228	248	368
∅ / d [mm]	48.3	60.3	88.9	114.3	168.3
Weight [kg]	9.0	13.3	26.0	27.0	66.8



Pos. Description

1	Outer part
2	Inner part
3	Flange
5	Back up ring
6	Internal wiper
9	O-Ring
10	Gasket
11	Dust seal
12	Plug
15	Ball
16	Grease nipple
18	Allen screw



Ordering System:

Type	Connections right / left	Style	Nominal diameter	Material	Working pressure	Miscellaneous
W	___ = Welding	10	1 1/2" up to 6"	26CrMo4	up to 580 psi (for applications with higher pressure we offer special swivel joints)	DIN
LW		11		42CrMo4		ANSI
T		12		1.4571		SAE
LT						...
V		20				
LA		21				
LCF		22				
HCR						(other materials on request)
F		30				
LF		31				
FP						
LFP						
LCF						

Additional Information:

Media / fluid (gasoline, sulfuric acid, milk, LPG...):

Working temperature:

Working space situation (dimensions, temperature of environment, etc...):

Type of movement (swiveling / angle?, rotation / rpm?...):

Side load:

Miscellaneous requirements: