



Type HT



Customized Swivel Joints



Center Flange Swivel Joints

High Temperature Swivel Joints

Design According to Customers Requirements

Know how & consulting directly from manufacturer with decades of experience

That's why you choose... The logo for IGATEC International. It features the word 'IGATEC' in a large, bold, grey sans-serif font. Above the 'TEC' part, the word 'International' is written in a smaller, blue sans-serif font. A horizontal blue line runs through the middle of the 'IGATEC' text.

- **Radial gaskets**
Allow a maximum of feasible sealing materials and longer lifetime compared to axial gaskets
- **DUPLEX, SUPERDUPLEX, HASTELLOY, ALUMINIUM...**
We machine all compatible materials
- **ASME, NACE, Norsok, DIN...**
We manufacture according to all required guidelines and directives
- **Customized connections**
- **IGATEC Swivel Joints**
Made of carbon steel (e.g. St52-3, ...) are nitrided to reach maximized hardness of surface and optimized corrosion protection at the same time
- **Certifications**
TA-Luft
VdS
ISO 9001:2008

Headquarter

**IGATEC GmbH &
IGATEC International GmbH**
Siemensstraße 18
D-67346 Speyer

Phone: +49 (0)6232 91 904-0
Fax: +49 (0)6232 91 904-990
eMail: info@igatec.de

Subsidiary

IGATEC International GmbH
Profilstraße 6
D-58093 Hagen

Phone: +49 (0)2331 36 788-0
Fax: +49 (0)2331 36 788-11
eMail: info@igatec-international.de

Swivel Joint Type HT

for High Temperature Applications



Dimensions:

Nominal diameter	DN20 / 3/4" up to DN400 / 16" [larger on request]
Working pressure P _{max}	100 bar / 1.450 psi *
Working temp. T _{min/max}	Up to 600°C / 1.112°F *
Material	1.4571, 42CrMo4, Duplex, Superduplex
Gasket material	According to customers spec.
Ball material	Stainless steel
Connection	Welding
Style	10, 11, 12, 20, 21, 22, 30, 31
Application	Solarthermal / oil & gas

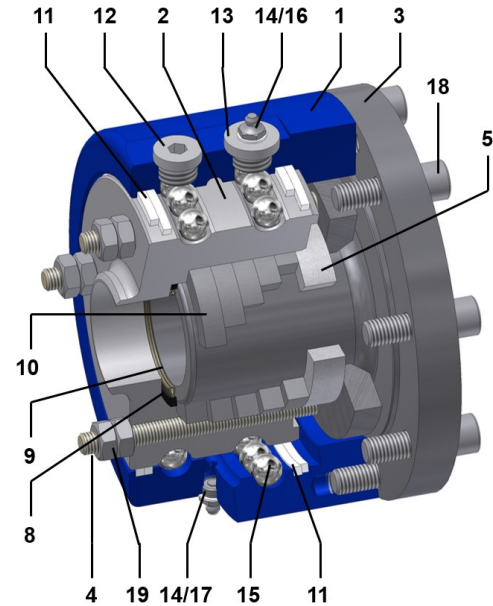
* P_{max} und T_{max} dürfen nicht gleichzeitig auftreten

Technical Features:

Design	Customized
No. of ball races	2
Fluid	Thermaloil, super critical steam, salt melt
Type of sealing	Radial
External dust seal	No
Secondary seal	No
Body	Three-parts
Connection for leakage control	On request
Without grease nipple	On request
Maximum speed	Depends on sealing material

Further Advantages:

	Adjustable Gaskets
--	--------------------

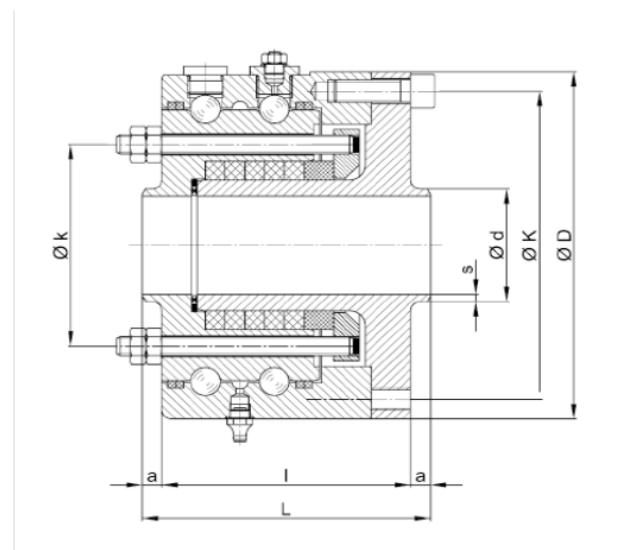


Pos. Description

1	Outer part
2	Inner part
3	Flange
4	Thrust washer
5	Thrust ring
8	Back up ring
9	Gasket
10	Compression gland
11	Packing cord

Pos. Description

12	Plug
13	Plug
14	Gasket
15	Ball
16	Grease nipple
17	Ventilation valve
18	Allen screw
19	Hexagon bolt



Swivel Joint Type SO-HT

Customized Swivel Joint with 90° Elbow



Dimensions:

Nominal diameter	DN20 / 3/4" up to DN400 / 16" [larger on request]
Working pressure P_{max}	100 bar / 1.450 psi *
Working temp. $T_{min/max}$	Up to 600°C / 1.112°F *
Material	1.4571, 42CrMo4, Duplex, Superduplex
Gasket material	According to customers spec.
Ball material	Stainless steel
Connection	Welding
Style	10, 11, 12, 20, 21, 22, 30, 31
Application	Solar thermal power plants

* P_{max} und T_{max} dürfen nicht gleichzeitig auftreten

Technical Features:

Design	Customized
No. of ball races	2
Fluid	Thermaloil, super critical steam, salt melt
Type of sealing	Radial
External dust seal	No
Secondary seal	No
Body	Three-parts
Connection for leakage control	On request
Without grease nipple	On request
Maximum speed	Depends on sealing material

Further Advantages:

	Adjustable Gaskets
--	--------------------

Special Design

Completive to the standard range IGATEC is tailoring Swivel Joints according to customers' requirements.

Technical solutions are drafted and realized in close cooperation with the customer.

3D-CAD-System Inventor enables IGATEC to design 3D-Prototypes of parts, to simulate movements and avoid collisions in front end of production.

