

A photograph of a complex industrial piping system. Large, light-colored pipes are connected using swivel-joint scissors, which allow for flexible movement. The system includes various valves, flanges, and support structures. A green banner at the top contains the title.

“Swivel-Joint-Scissors”



Flexible Pipework

Customized “Swivel-Joint-Scissors”

Customized “Swivel-Joint-Hoses”

Know how & consulting directly from manufacturer with decades of experience

That's why you choose... The logo for IGATEC International. It features the word 'IGA' in a large, bold, sans-serif font. To its right, the word 'International' is written in a smaller, blue, sans-serif font. Below 'IGA' and 'International' is a horizontal line. To the right of this line, the word 'TEC' is written in a large, bold, sans-serif font.

- **Radial gaskets**
Allow a maximum of feasible sealing materials and longer lifetime compared to axial gaskets
- **DUPLEX, SUPERDUPLEX, HASTELLOY, ALUMINIUM...**
We machine all compatible materials
- **ASME, NACE, NORSOK, DIN...**
We manufacture according to all required guidelines and directives
- **Customized connections**
- **IGATEC Swivel Joints**
Made of carbon steel (e.g. St52-3, ...) are nitrided to reach maximized hardness of surface and optimized corrosion protection at the same time
- **Certifications**
TA-Luft
VdS
ISO 9001:2008

Headquarter

**IGATEC GmbH &
IGATEC International GmbH**
Siemensstraße 18
D-67346 Speyer

Phone: +49 (0)6232 91 904-0
Fax: +49 (0)6232 91 904-990
eMail: info@igatec.de

Subsidiary

IGATEC International GmbH
Profilstraße 6
D-58093 Hagen

Phone: +49 (0)2331 36 788-0
Fax: +49 (0)2331 36 788-11
eMail: info@igatec-international.de

“Swivel-Joint-Scissors“

Dimensions:

Nominal diameter	DN25 / 1" up to DN300 / 12" [larger on request]
Working pressure	Up to 420 bar / 6.000 psi * [higher on request]
Working temp.	-55°C up to 250°C / -67°F up to 482°F *
Material	42CrMo4, 1.4571 [other materials on request e.g. Hastelloy]
Gasket material	Depends on swivel joint type
Ball material	Stainless steel
Connection	Depends on swivel joint type
Application	Walking beam furnace, filtration press, loading systems...

* P_{max} and T_{max} may not occur at the same time

Technical Features:

Design	According to customers spec.
No. of ball races	1 or 2 per swivel joint, depends on swivel joint type
Fluid	Diesel, ethanol, LPG, cooling water, food, aggressive chemicals (e.g. H ₂ SO ₄)...
Type of sealing	Radial, axial
External dust seal	Depends on swivel joint type
Secondary seal	Depends on swivel joint type
Body	Depends on swivel joint type
Connection for leakage control	Yes
Without grease nipple	On request (e.g. floating suction systems)
Maximum speed	Depends on gasket material
Opening angle	According to customers spec.
Number of bent tubes	According to customers spec.
Length of bent tubes	According to customers spec.

Further Advantages:

	Piggable, heatable
--	--------------------

Certifications:

	VdS
--	-----

IGATEC “Swivel-Joint-Scissors“ combine three styles of swivel joints with pipe legs. By doing this it is possible to realize almost every three-dimensional movement.

IGATEC “Swivel-Joint-Scissors“ are also the major alternative to hose connections when they have to face high stress by torsion and bending forces. Leakage in hoses occurs almost promptly and may cause serious damage. Leakage in “Swivel-Joint-Scissors“ does not occur promptly. It is visualized by the appearance of droplets and can be removed easily by changing the affected gasket.



To design our “Swivel-Joint-Scissors“ we need a precise description of the application to be able to choose the optimum type of swivel joint.

Example given: If “Swivel-Joint-Scissors“ for loading systems are needed, we recommend our swivel joints for loading arms (e.g. for food or pharmaceuticals Type F, for corrosive chemicals Type HCR, for fire-extinguishing systems Type W and for other applications Type LA).

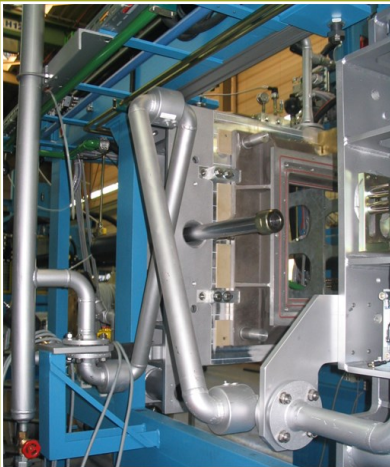
Swivel joints for loading systems are easier to maintain (e.g. simple change of main gasket).

“Swivel-Joint-Scissors”



“Swivel-Joint-Scissors” DN100 at a walking beam furnace to supply cooling water.

This application “Swivel-Joint-Scissors” shows the safest alternative to hoses. Leakage occurs slowly and does not cause spontaneous failure and serious damage.



Swivel-Joint-Scissors“ DN50 at a filtration press.



Piggable “Swivel-Joint-Scissors” DN200 on a ship loading pontoon.

“Swivel-Joint-Scissors”



“Swivel-Joint-Scissors” DN200 of an IGATEC On Spot Loading Arm.



“Swivel-Joint-Scissors” DN150 for crude oil production (SAGD - Steam Assisted Gravity Drainage)